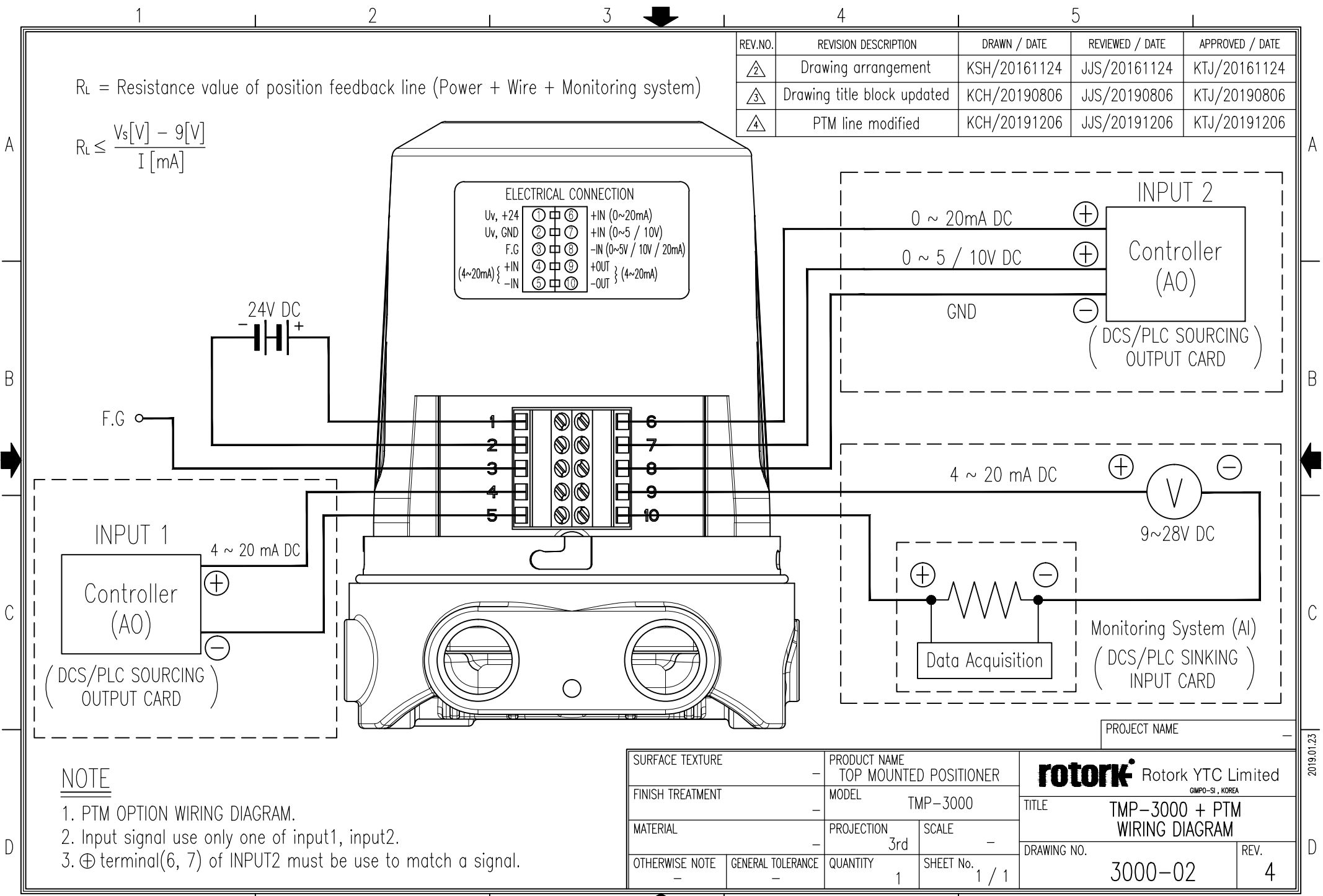


R_L = Resistance value of position feedback line (Power + Wire + Monitoring system)

$$R_L \leq \frac{V_s[V] - 9[V]}{I [mA]}$$

REV.NO.	REVISION DESCRIPTION	DRAWN / DATE	REVIEWED / DATE	APPROVED / DATE
2	Drawing arrangement	KSH/20161124	JJS/20161124	KTJ/20161124
3	Drawing title block updated	KCH/20190806	JJS/20190806	KTJ/20190806
4	PTM line modified	KCH/20191206	JJS/20191206	KTJ/20191206

ELECTRICAL CONNECTION			
$U_v, +24$	①	⑥	+IN (0~20mA)
U_v, GND	②	⑦	+IN (0~5 / 10V)
F.G	③	⑧	-IN (0~5V / 10V / 20mA)
(4~20mA)	+IN	④	+OUT
	-IN	⑤	-OUT



NOTE

1. PTM OPTION WIRING DIAGRAM.
2. Input signal use only one of input1, input2.
3. ⊕ terminal(6, 7) of INPUT2 must be use to match a signal.

SURFACE TEXTURE		PRODUCT NAME		Rotork YTC Limited <small>GMPO-SI, KOREA</small>	
FINISH TREATMENT		TOP MOUNTED POSITIONER			
MATERIAL		MODEL		TITLE	
OTHERWISE NOTE		GENERAL TOLERANCE		TMP-3000 + PTM WIRING DIAGRAM	
		QUANTITY		DRAWING NO.	
		1		3000-02	
		SHEET No.		REV.	
		1 / 1		4	

PROJECT NAME _____